

DURDEN & HUNT

INTERNATIONAL



Queens Road, Essex IG9

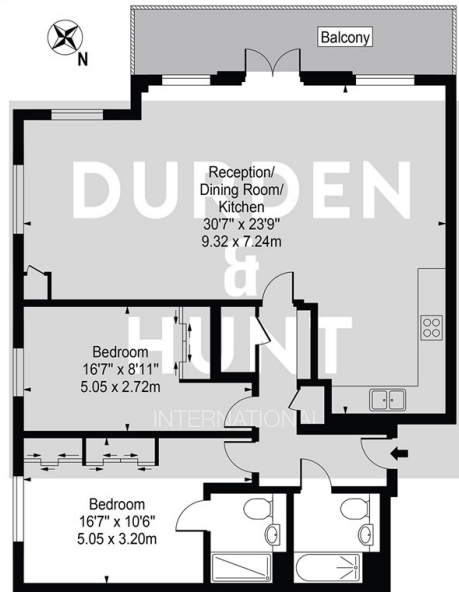
£2,250 PCM

- First Floor Apartment
- Private Balcony
- Secure Entry System
- Two Double Bedrooms
- Modern Open Plan Kitchen, Dining And Living Area
- Close To Transport Links And Amenities
- Two Bathrooms One Of Which Ensuite
- Parking

309 High Road, Loughton, Essex, IG10 1AL
0203 026 0160

loughton@durdenandhunt.co.uk
<https://www.durdenandhunt.co.uk/>

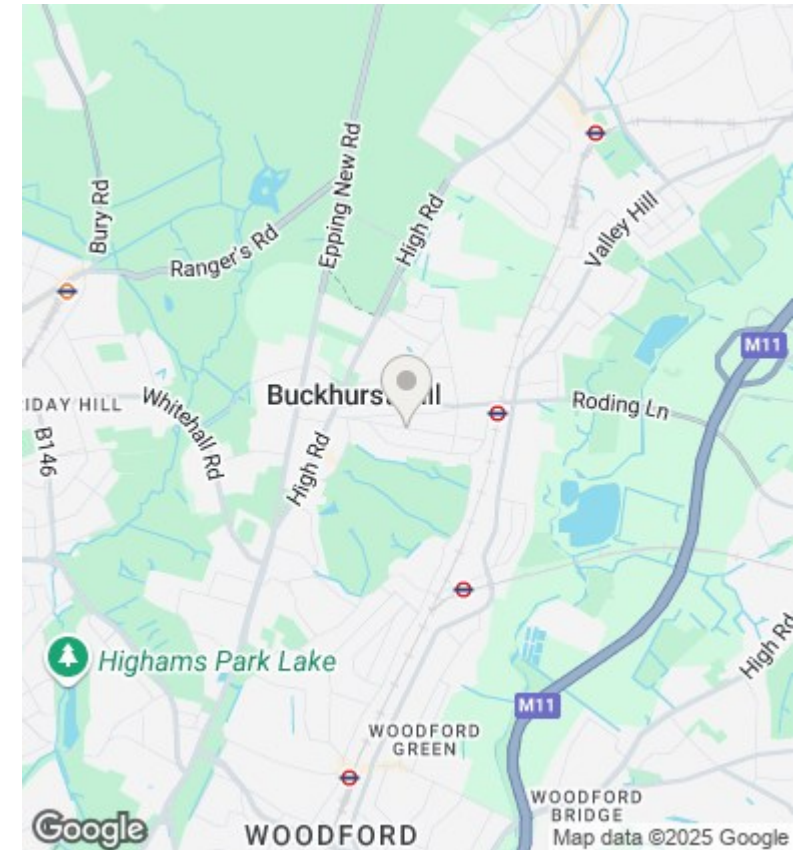
Ivydene Court,
Queens Road
Approx. Gross Internal Area 1019 Sq Ft - 94.67 Sq M



First Floor

For Illustration Purposes Only - Not To Scale

This floor plan should be used as a general outline for guidance only and does not constitute in whole or in part an offer or contract. Any intending purchaser or lessee should satisfy themselves by inspection, searches, enquiries and full survey as to the correctness of each statement. Any areas, measurements or distances quoted are approximate and should not be used to value a property or be the basis of any sale or let.



Viewings

Viewings by arrangement only. Call 0203 026 0160 to make an appointment.

Council Tax Band

E

EPC Rating:

Energy Efficiency Rating		
	Current	Potential
Very energy efficient - lower running costs		
(92 plus) A		
(81-91) B		
(69-80) C		
(55-68) D		
(39-54) E		
(21-38) F		
(1-20) G		
Not energy efficient - higher running costs		
England & Wales	EU Directive 2002/91/EC	